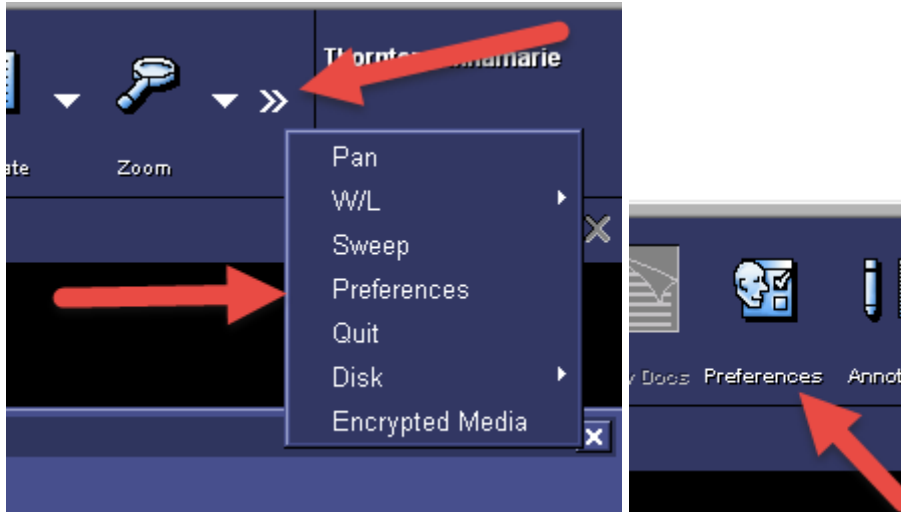
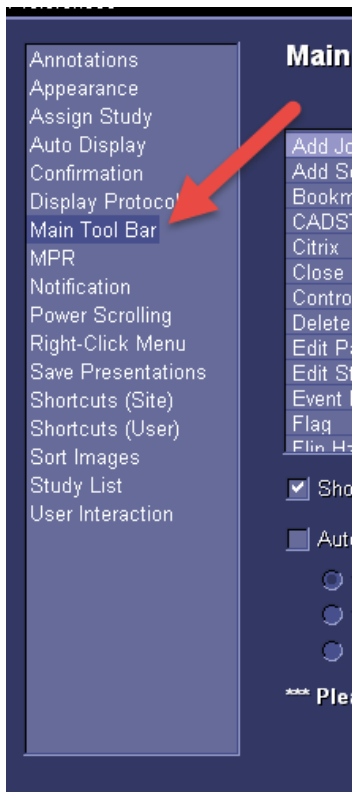


How to add TRA Rad Portal shortcut to you FHS Main Tool Bar

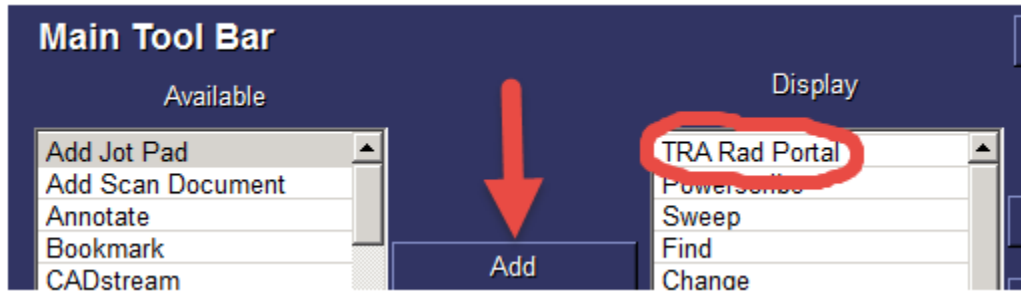
1. Click on Preferences on your main tool bar



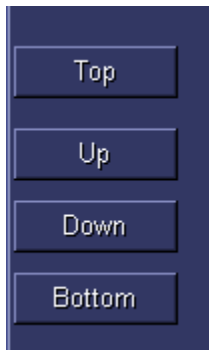
2. Select Main Tool Bar



3. Find TRA Rad Portal in the Available column and add it to your Display column.



4. Use the placement keys to move it to where you would like it in your display. Then click Apply and Okay.



5. The button will just say TRA Rad Portal with no icon.