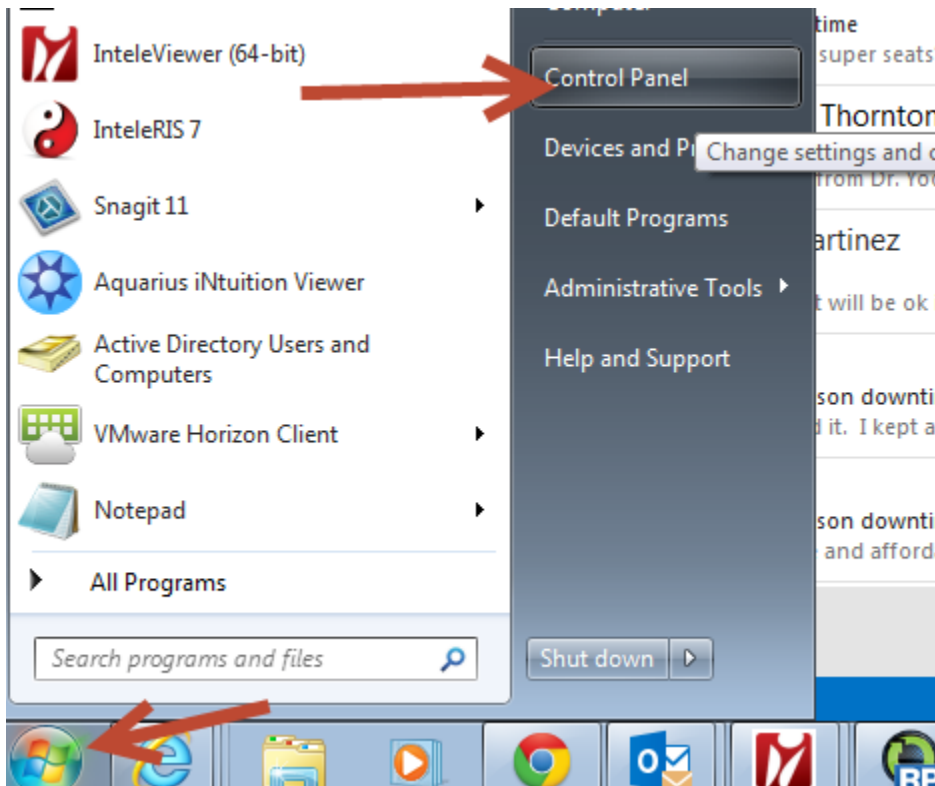


Mouse Click Shortcuts for scrolling in IntelViewer

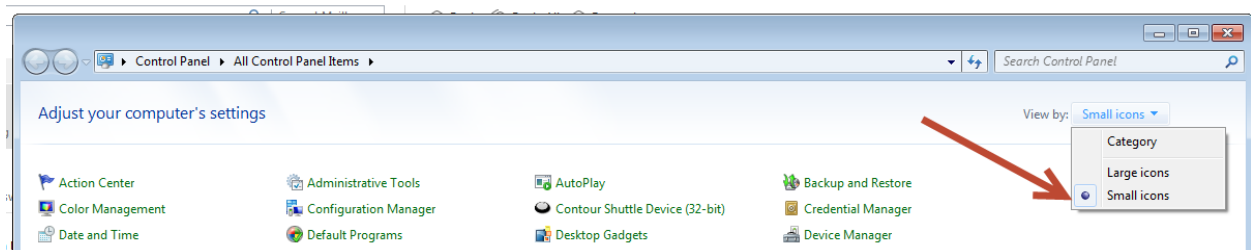
IntelRad has provided us with 2 workarounds to be able to scroll through studies with the stack tool without having to hold the left mouse button down. One uses a keyboard shortcut and the other is using the mouse only. Again keep in mind the stack tool has to be selected. Also if you change these settings it will be for your profile on that workstation. It will not change it for any other user who logs into that workstation. You will have to do it on each workstation you use.

Keyboard Shortcut

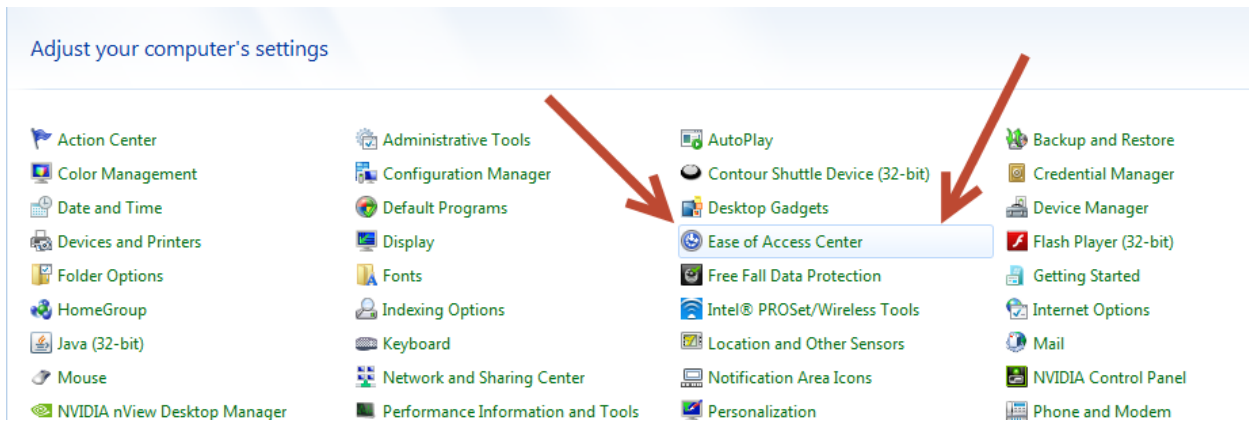
1. Click on the Windows Start Icon then click on Control Panel.



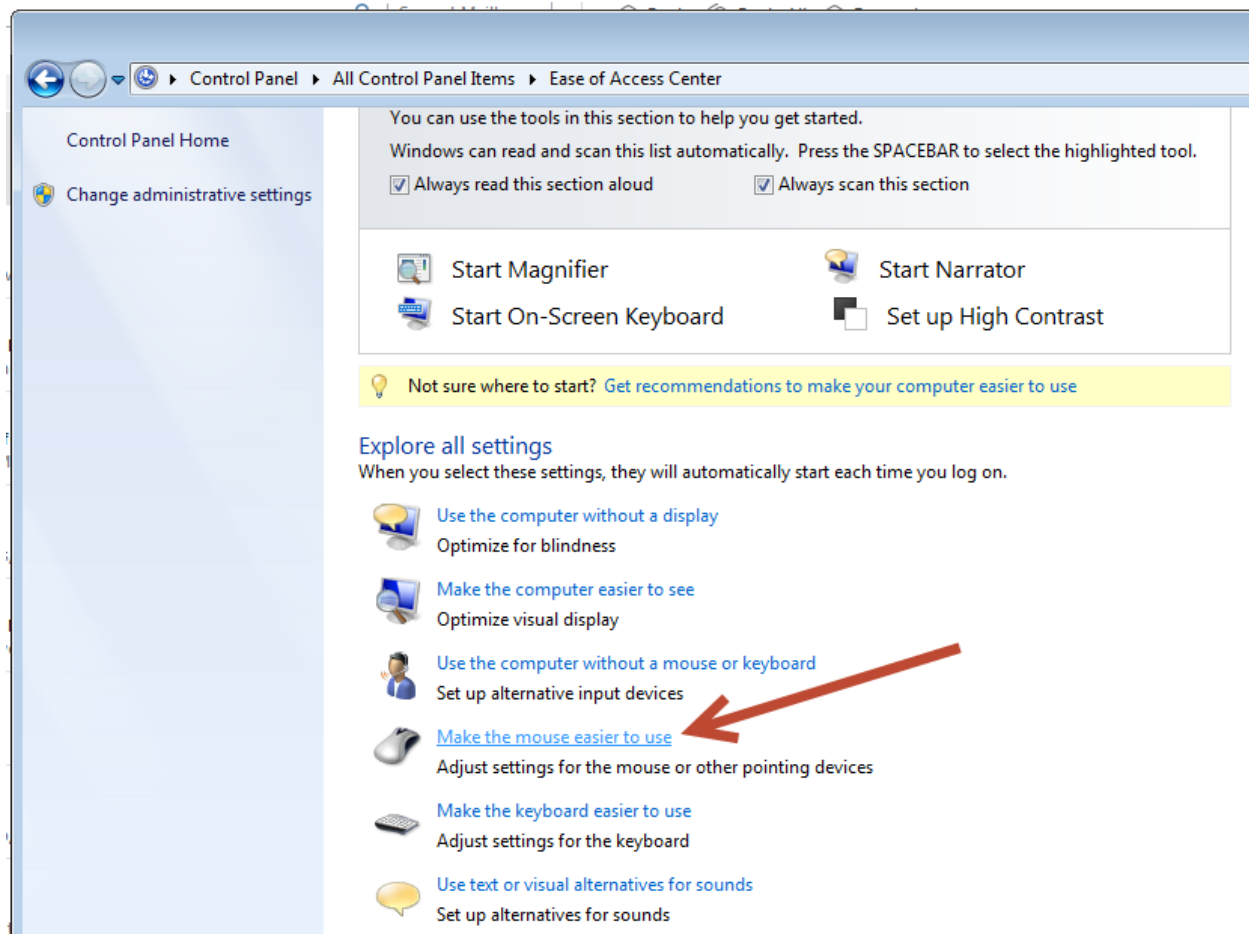
2. Once the Control Panel is open click the drop down for View by: and make sure Small icons is selected.



3. Click on Ease of Access Center



4. Click on Make the mouse easier to use.



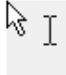








5. Click on Turn on Mouse Keys and then Apply and Okay.

Make the mouse easier to use

When you select these settings, they will automatically start each time you log on.

Mouse pointers

Change the color and size of mouse pointers.

<input checked="" type="radio"/> Regular White		<input type="radio"/> Regular Black		<input type="radio"/> Regular Inverting	
<input type="radio"/> Large White		<input type="radio"/> Large Black		<input type="radio"/> Large Inverting	
<input type="radio"/> Extra Large White		<input type="radio"/> Extra Large Black		<input type="radio"/> Extra Large Inverting	

Control the mouse with the keyboard

Turn on Mouse Keys

Use the numeric keypad to move the mouse around the screen.

[Set up Mouse Keys](#)

Make it easier to manage windows

Activate a window by hovering over it with the mouse

Prevent windows from being automatically arranged when moved to the edge of the screen

See also

[Mouse settings](#)

[Learn about additional assistive technologies online](#)

Control the mouse with the keyboard

Turn on Mouse Keys

Use the numeric keypad to move the mouse around the screen.

[Set up Mouse Keys](#)

Make it easier to manage windows

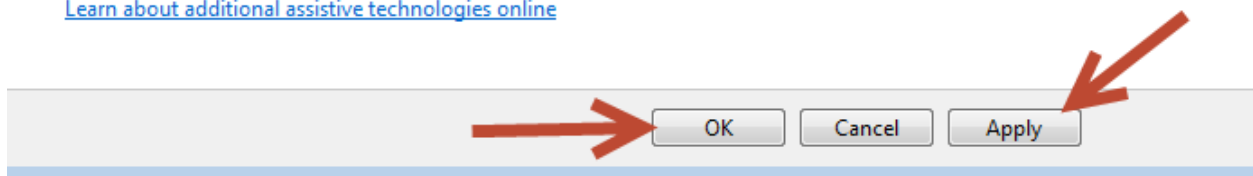
Activate a window by hovering over it with the mouse

Prevent windows from being automatically arranged when moved to the edge of the screen

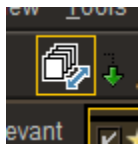
See also

[Mouse settings](#)

[Learn about additional assistive technologies online](#)



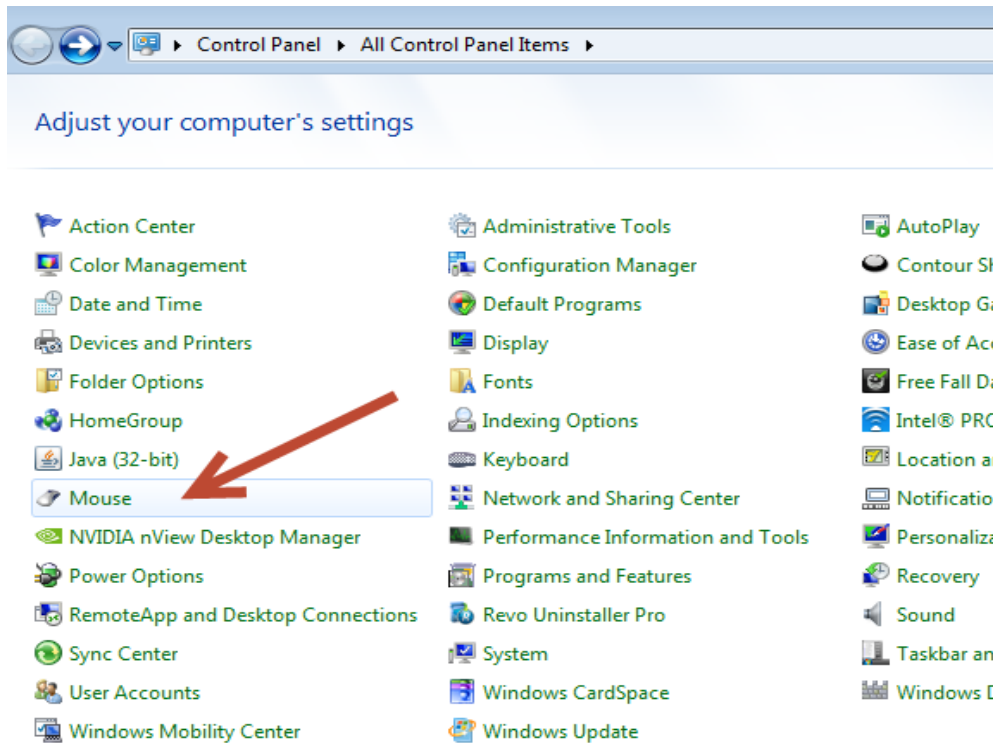
6. When in IntelViewer make sure the Stack tool is selected. You will know because the mouse pointer becomes the icon below.



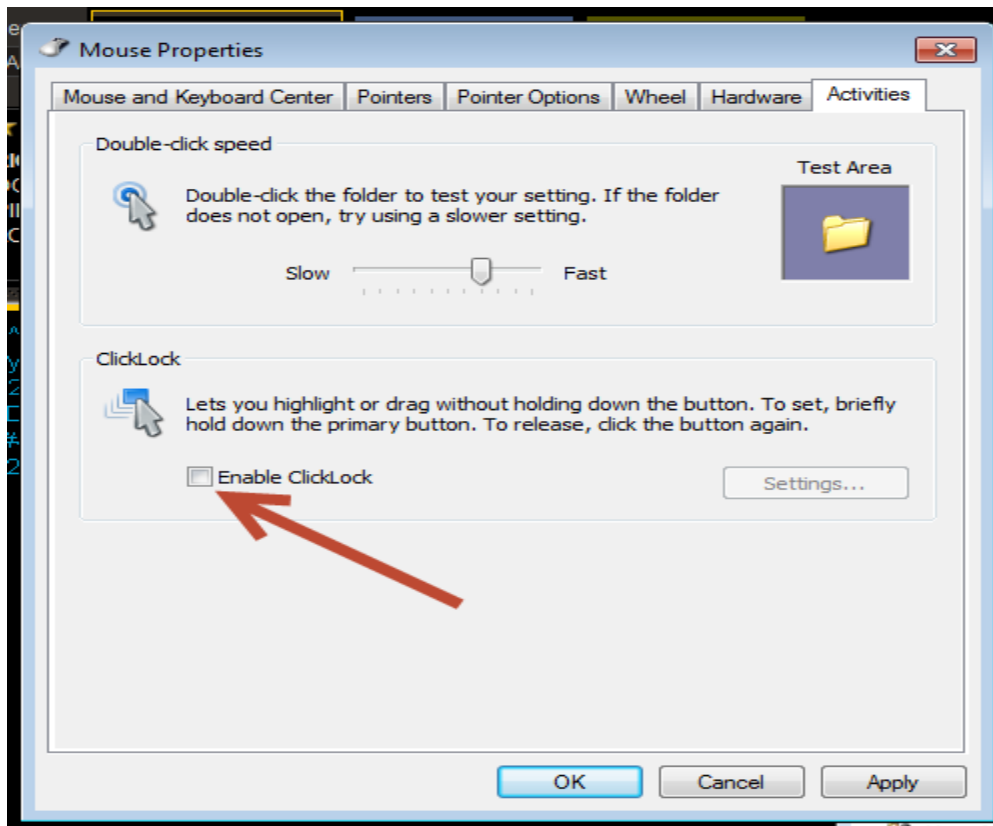
7. Make sure you Num Lock key is on. It usually is indicated by a light on the keyboard. Once Num Lock is activated click on 0 on the keypad. Once you click 0 the icon for the stack tool that is your pointer will disappear. When you start moving your mouse up and down the images will scroll.
8. To deactivate left click.
9. Be aware if you have shortcuts set to your Number pad they will not work if you use this work around.

Mouse Click Shortcut

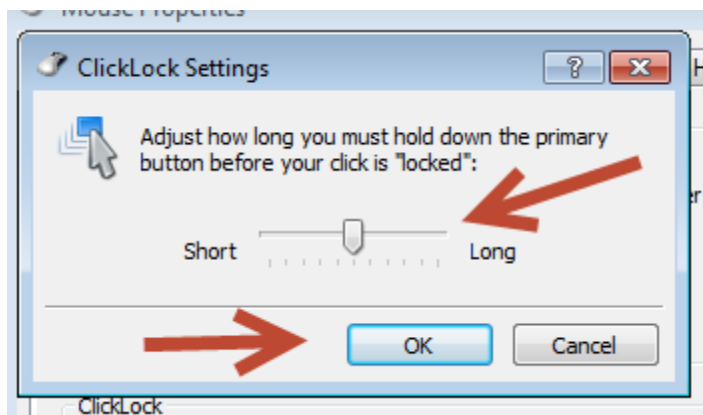
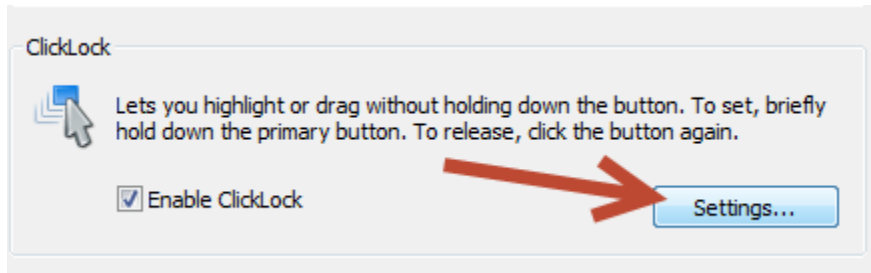
1. Follow steps 1 and 2 as above.
2. Click on Mouse.



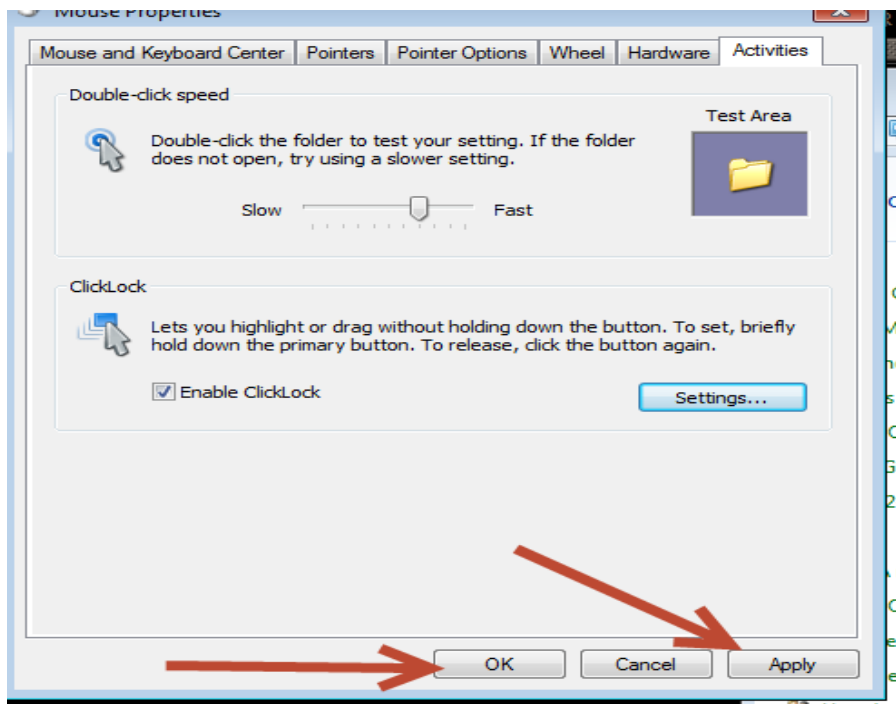
3. Click Enable ClickLock.



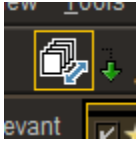
4. Then click Settings to adjust the time you have to hold the mouse button down to activate. In the middle where it defaults to is about 3 seconds. Adjust the to what you would prefer, but keep in mind this will affect every time you hold a mouse key down. So if you click and drag images down into viewports it will hold them and you will have to click to drop them if have you have the time set too short.



5. Click Apply and Okay.



6. When in IntelViewer make sure you have the Stack tool activated.



7. Hold the left mouse down until the icon disappears as the pointer. Once you release the left mouse you can just move the mouse up and down to scroll without keeping the left mouse button pressed. To stop scrolling just left click the mouse again.